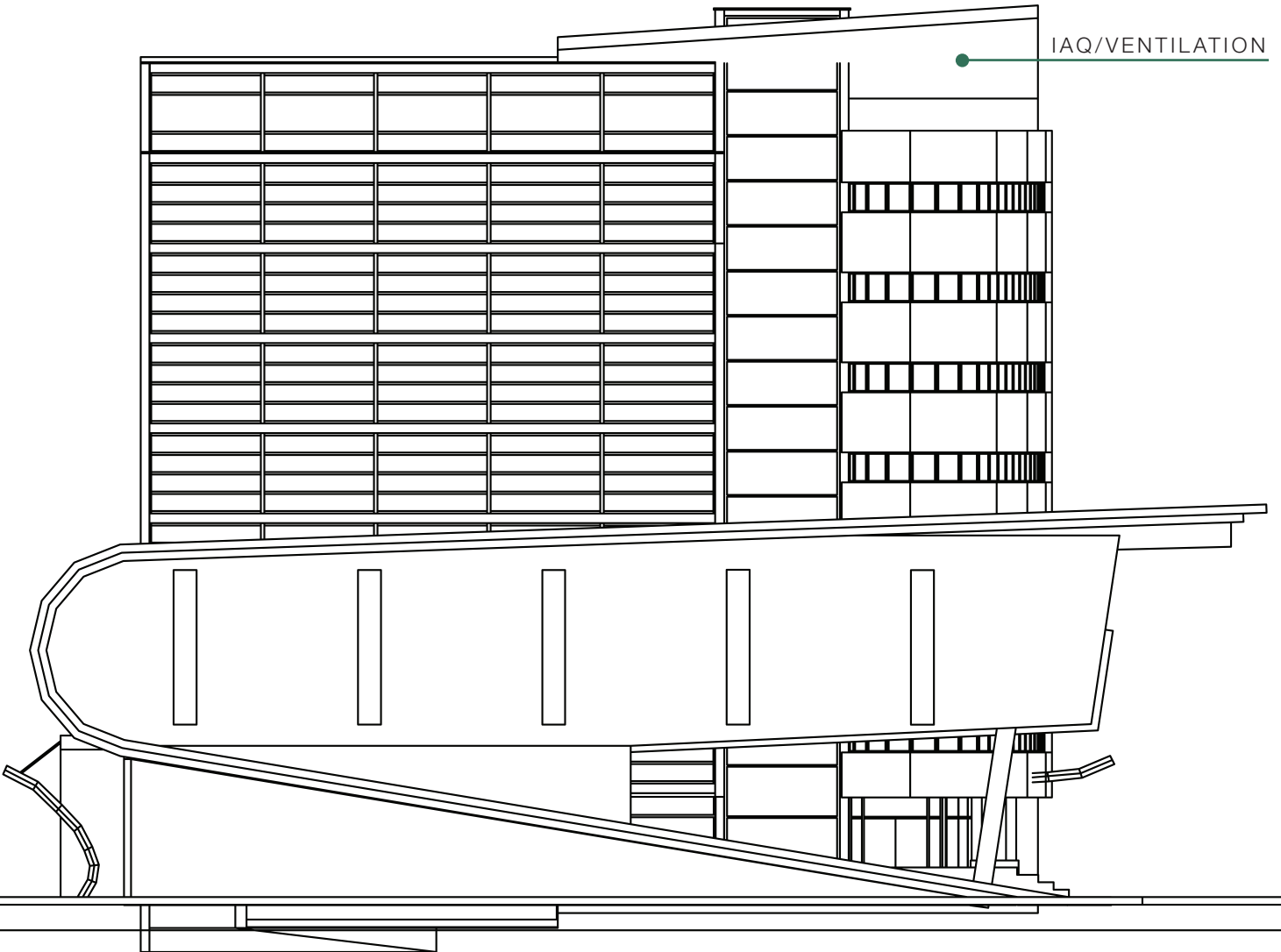




LCH-H (HRV) + LCH-E (ERV)

Light Commercial Ventilation



LCH-H (HRV) + LCH-E (ERV)

Greentek Light Commercial Series of Heat and Energy Recovery Ventilators (HRV & ERVs) are versatile, reliable, and efficient with MERV3 rated washable filters standard.

LCH-H features a fixed plate cross-flow exchanger that transfers heat (sensible heat) between airstreams. The ventilator helps precool the fresh air brought from outdoors during summer months and preheat the fresh air during winter months.

LCH-E features a fixed plate cross-flow exchanger that transfers both heat (sensible heat) and moisture (latent heat) between airstreams. The core recovers moisture from the return air while preheating the fresh air brought from outside during winter months and reduces moisture in the fresh air during summer months.

Enhance your ventilation designs by incorporating efficient recovery ventilators into your plans with Greentek.

Recommended Control²

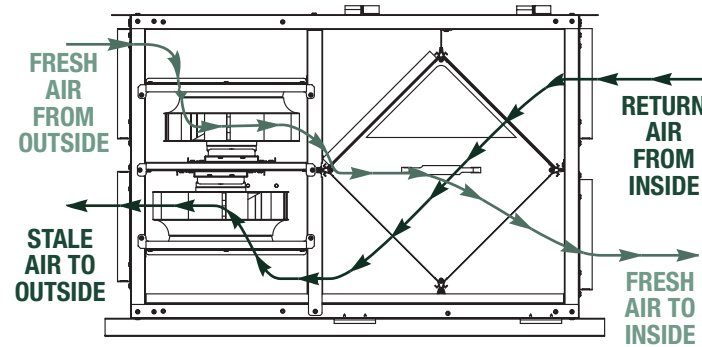


STS 2.0, TVOC sensing, multi-function touchscreen

TVOC sensing controller, multi-function, touchscreen, 4 wire

- Sleek design with backlight LCD touchscreen
- ECO mode selects the best operating mode and speed for the season, minimizing energy use associated with ventilation
- Set preferred indoor relative humidity range and ventilation mode for day and night conditions
- No battery to replace, all programmed settings are retained during power outages
- Maintenance reminder indicator
- Error code messages reduce troubleshooting time

² LCH-H + LCH-E are compatible with all Greentek controllers (EHC 2.5, EHC 2.0, T4, T5 and RD-1)



Cross-flow Core

- Up to 66% Sensible Recovery Effectiveness (LCH-4E)¹
- Transfer heat and moisture from incoming air to outgoing air

¹ Performance shown for LCH-4E model at 35°F (1.7°C), 225 cfm (106 L/s)

LCH-H Series



HEAT RECOVERY VENTILATORS	LCH-4H	LCH-7H	LCH-12H
Airflow range (cfm @ 0.4" P _s)	209 - 465	350 - 723	560 - 1219
Voltage / Phase (V/~)	120/1	120/1	120/1
Phase	1	1	1
Current (A)	4.0	5.6	11.2
Power rated (W)	470	670	1340
Efficiency @ 0.4" (cfm/w)	1.0	1.1	1.0
Heating Effectiveness Sensible ³ (%)	56	55	55
Height (in (mm))	22 11/16 (577)	22 (559)	22 (559)
Depth (in (mm))	29 1/2 (747)	36 1/2 (927)	51 2/5 (1306)
Width (in (mm))	35 15/16 (911)	36 1/4 (921)	36 1/3 (923)
Weight (lbs (Kg))	146 (66)	215 (98)	252 (114)

LCH-E Series



ENERGY RECOVERY VENTILATORS	LCH-4E	LCH-7E	LCH-12E
Airflow range (cfm @ 0.4" P _s)	225 - 470	350 - 700	555 - 1179
Voltage / Phase (V/~)	120/1	120/1	120/1
Current (A)	4.17	5.58	11.17
Power rated (W)	500	670	1340
Efficiency @ 0.4" (cfm/W)	0.9	1.1	0.9
Heating Effectiveness Sensible/Latent/Total ³	63/46/59	54/35/50	54/35/50
Cooling Effectiveness Sensible/Latent/Total ³	63/42/58	51/32/49	51/32/49
Height (in (mm))	22 11/16 (577)	22 (559)	22 (559)
Depth (in (mm))	29 1/2 (747)	36 1/3 (923)	51 2/5 (1306)
Width (in (mm))	35 15/16 (911)	36 1/3 (923)	36 1/3 (923)
Shipping weight (lbs (Kg))	132 (60)	169 (77)	210 (95)

³ Effectiveness data relating to AHRI 1060 Standards

THE DISTINCTIVE FEATURES OF LCH-H + LCH-E:



Reliable



Maintenance free



MERV 3 filters standard



Easy balancing



Reversible for easy install

TYPICAL LCH-H + LCH-E APPLICATIONS:

- Schools
- Animal Boarding/ Kennels
- Retail
- Restrooms
- Barber Shops
- Floral Shops
- Office Buildings
- Conference Rooms
- Locker Rooms



Greenetek®



Greenetek
50 Kanalfakt Way, Bouctouche, NB Canada, E4S 3M5
Toll free: (888) 724-5211
Visit us at: www.greentek.ca

You can find Greenetek Indoor Air Quality products at the following distributor:



Greenetek reserves the right to modify a product, without prior notice, whether in design, colour or specifications, in order to offer at all times a quality product that is highly competitive. Please consult your national and local building codes to find out whether the installation of electrical products requires the services of a certified technician or electrician. Greenetek® is a registered Trademark used under license by Systemair Inc. All rights reserved.