

**NEW**

# LCH SERIES

Heat or Energy Recovery  
Ventilation Systems



You can find Greentek Indoor Air Quality products at the following distributor:

**Greentek**  
50 Kanalfakt Way, Bouctouche, NB Canada, E4S 3M5  
Toll free: (888) 724-5211  
Fax: (866) 426-7430  
Visit us at: [www.greentek.ca](http://www.greentek.ca)

Greentek reserves the right to modify a product, without prior notice, whether in design, colour or specifications, in order to offer at all times a quality product that is highly competitive. Please consult your national and local building codes to find out whether the installation of electrical products requires the services of a certified technician or electrician. Greentek® is a registered Trademark used under license by Systemair Inc. All rights reserved.



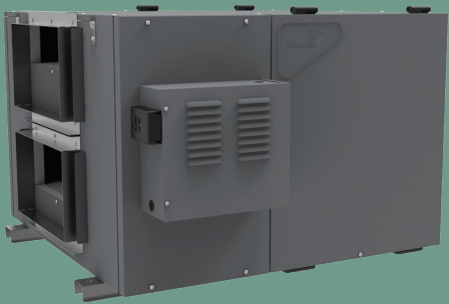
## Advanced Technology to Make Your Indoor Air Quality Vision a Reality





Introducing the New Greentek Light Commercial Series of Heat and Energy Recovery Ventilators. Offers features and benefits that are revolutionary. They are not only versatile, reliable & efficient they allow peace of mind and comfort for years to come.

More and more illnesses are associated to poor indoor air quality, heat or energy recovery has become an essential solution in improving the indoor air quality. The Greentek series of light commercial will have you covered, from daycare and small offices to large commercial applications.



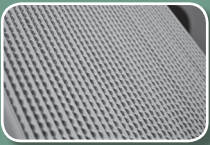
Heat Recovery Core

The state of the art fixed plate cross-flow heat exchanger using aluminum, transferring sensible heat between air streams. The heat recovery cores are manufactured in our facility to assure the highest level of quality.



Energy Recovery Core

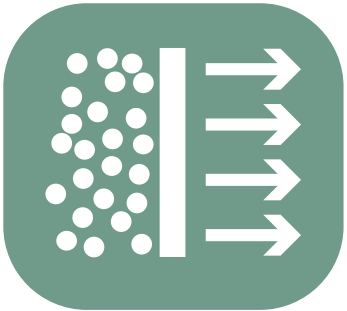
Using a patented thin dense polymer membrane cross-flow core. This technology allows the water vapour to absorb and permeate through the membrane, while blocking the transfer of gases, VOC's and other contaminant compounds.



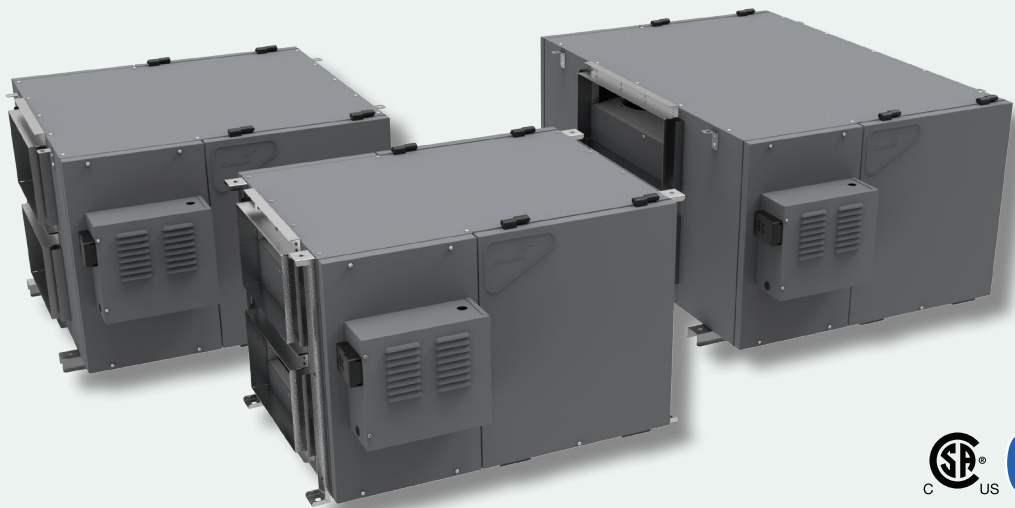
Reliability and peace of mind



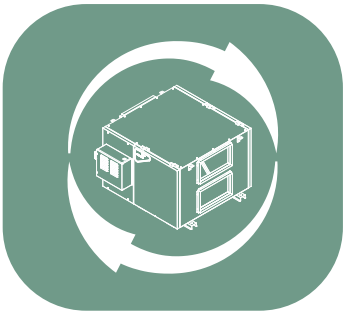
Maintenance free high performance fans assure maximum airflow and efficiency



Standard MERV6 rated washable filters



Easy balancing with the Duotrol balancing system\*



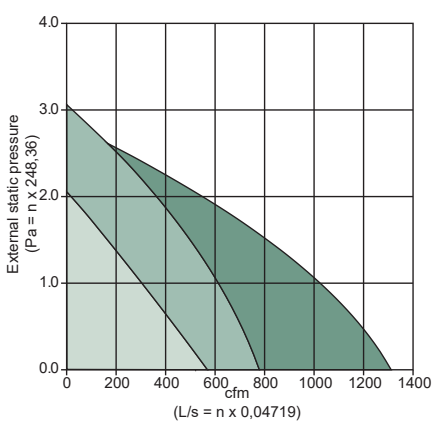
The reversible control panel makes these unit completely reversible.

Specification

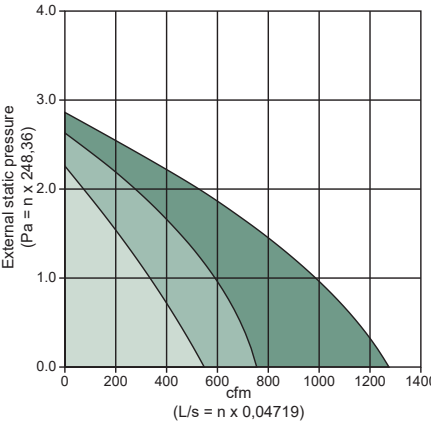
Models	Type	Item	Airflow Range	Rect. Duct Dia.	Voltage	Phase	Current	Power	Actual Weight
	Product	No.	CFM (L/s)	Inches (mm)	V	~	A	W	Lbs (Kg)
LCH-4H	HRV	463300	200 (94 L/s) to 450 (212 L/s)	8" (203mm) x 14" (256mm)	120	1	3.92	940	146 (66kg)
LCH-7H	HRV	463301	500 (236 L/s) to 750 (354 L/s)	8" (203mm) x 14" (256mm)	120	1	5.58	1340	185 (84kg)
LCH-12H	HRV	463302	1200 (566 L/s)	8" (203mm) x 20" (508mm)	120	1	11.17	2680	252 (114.5kg)
LCH-4E	ERV	463303	200 (94 L/s) to 450 (212 L/s)	8" (203mm) x 14" (256mm)	120	1	4.17	1000	132 (60kg)
LCH-7E	ERV	463304	500 (236 L/s) to 750 (354 L/s)	8" (203mm) x 14" (256mm)	120	1	5.58	1340	169 (77kg)
LCH-12E	ERV	463305	1200 (566 L/s)	8" (203mm) x 20" (508mm)	120	1	11.17	2680	232 (105Kg)
GTD MK14	ACC	463306	-	8" (203mm) x 14" (256mm)	24V	1	5VA	2	8 (2.63kg)
GTPDK14	ACC	463308	-	8" (203mm) x 14" (256mm)	24V	1	5VA	2	3.4 (1.54kg)
GTD MK20	ACC	463307	-	8" (203mm) x 20" (508mm)	24V	1	5VA	2	10 (4.54kg)
GTPDK20	ACC	463309	-	8" (203mm) x 20" (508mm)	24V	1	5VA	2	4.7 (2.13kg)

Airflow Range (High Speed)

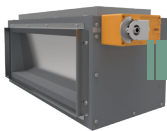
- LCH-4H
- LCH-7H
- LCH-12H



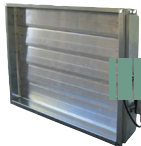
- LCH-4E
- LCH-7E
- LCH-12E



Accessories



GTDMK  
Recirculation  
damper module kit  
(HRV models only)



GTPDK  
O/A motorized  
prevention  
damper kit



\*Duotrol available on LCH-4 and LCH-7 series only.