

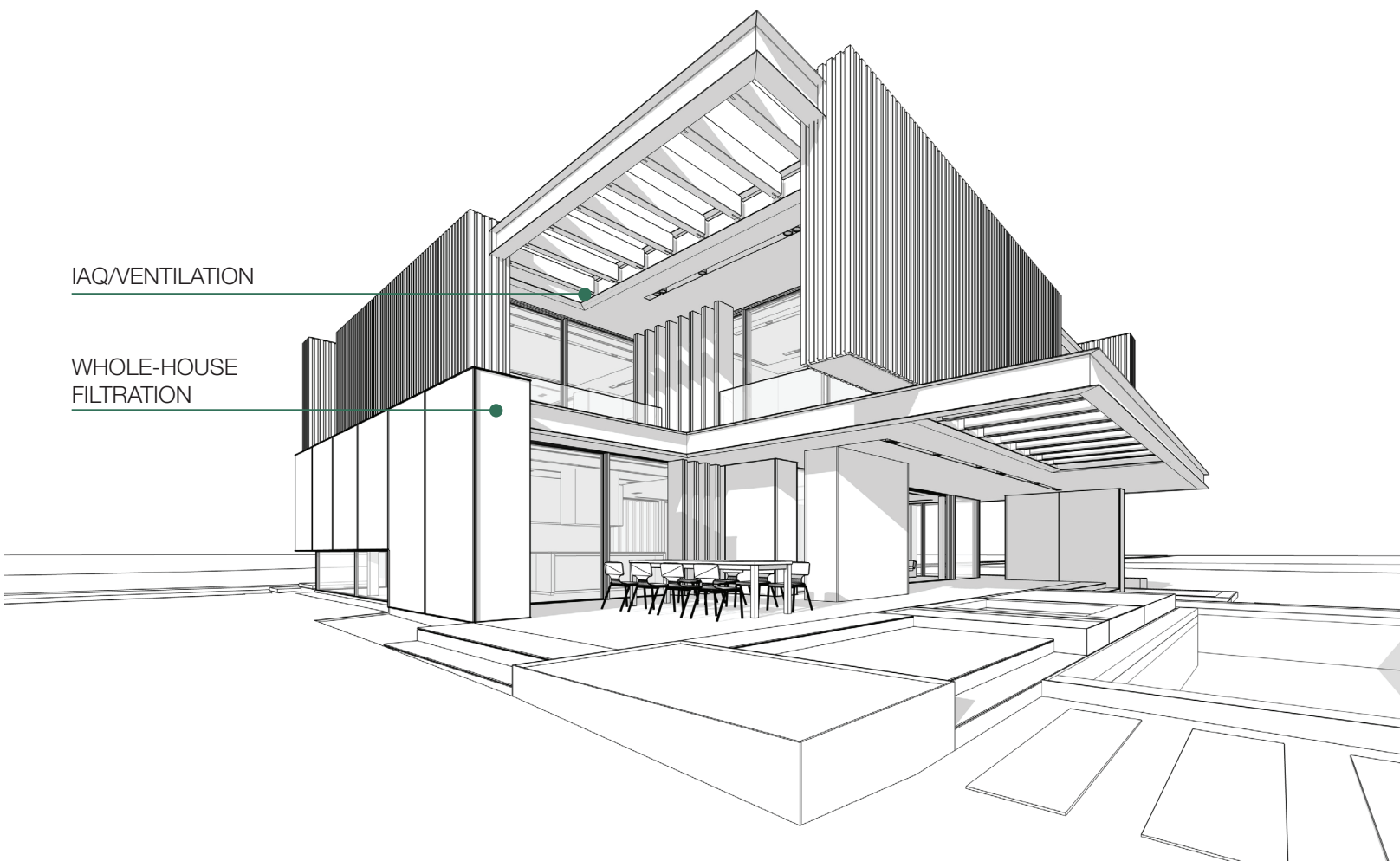


Heat and Energy Recovery Ventilators

SOLACE®, PREMIER, PROFILE Series

IAQ/VENTILATION

WHOLE-HOUSE
FILTRATION



SOLACE®

SOLACE® heat recovery ventilator (HRV) provides a controlled way of ventilating a home. It works continuously to supply fresh, filtered air into the building while removing the equal amount of moist, stale air.

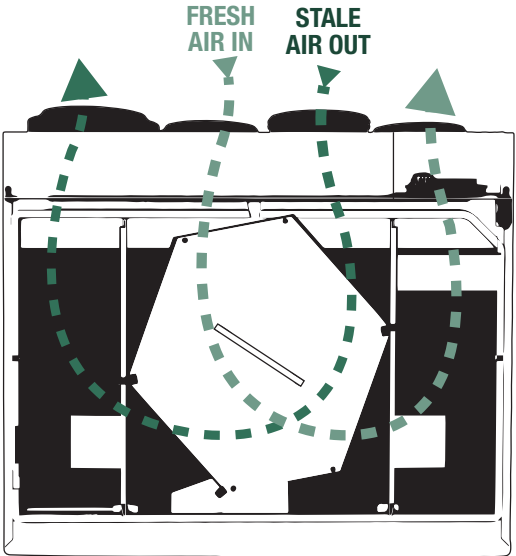
Up to 82% (on EC models) of the heat in the extracted air is recovered by the heat exchanger and used to heat the fresh air coming from outside.



- Round metal duct connections with rubberized duct seals
- Plastic collar shrouds with integrated backdraft prevention
- Removable screw terminal for easy connection with external access
- Top port design fits in tight spaces
- Includes chains. Optional wall mounting, sold separately.
- Counterflow heat recovery core
- Electrical box external access with easy connectors.
- Multiple speed operation
- Internal recirculation defrost
- Injected foam cabinet UL rated with improved aerodynamics, insulation and sound proofing
- Optional MERV 13 Filters
- Energy-efficient motors

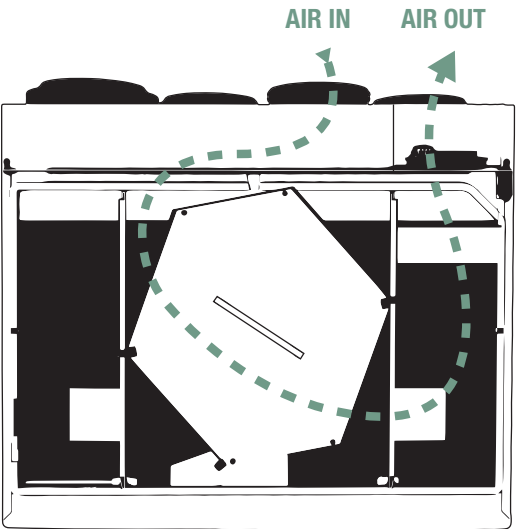
 BIM Objects available (.RFA and .DXF files)

 Single Family Home



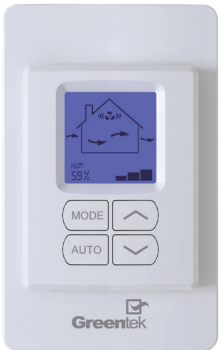
Counterflow Core

- More efficient than cross-flow
- Exceptional sensible recovery up to 82%



Recirculation Defrost

- Most energy efficient frost prevention
- Ideal for high humidity indoor conditions or colder outdoor conditions



EHC 2.5, Multi-Function

This control activates the system on 3 possible modes of operation:

- Ventilation Mode - Removes stale air from inside your home and replaces it with fresh outdoor air
- Recirculation Mode - Takes air from areas of your home and redistributes it to other rooms. No outdoor air is introduced into the home¹
- Standby Mode - Inactive unless the indoor relative humidity is above the setpoint on the control

The fan speed can be selected.– Reduced, Medium, Normal or 20min/h

***SOLACE** is compatible with all controls

¹This option only applies to units that have recirculating features

WHAT SETS **SOLACE®** APART?



Counterflow core



Optional MERV-13 Filter



Top ported


PREMIER

PREMIER is designed for high static pressure applications that demand high efficiency. The product is equipped with an automatic defrost mechanism that is activated when outdoor air temperature drops to 23°F (-5°C) or lower. During the defrost cycle, the supply air fan shuts down while the exhaust air fan switches into high speed to maximize the effectiveness.

The appliance features an efficient cross-flow exchanger with SRE up to 75%, standard MERV3 filters, a hanging chain kit, easy connect ports, duct ports with plastic collar shrouds for simple and quick installation, and integrated air balancing taps.

- Compact design
- Electrostatic filters (washable)
- Cross-flow core (ERV) transfers both heat and humidity
- Cross-flow core (HRV) transfers heat only
- Removable screw terminal for easy connection with external access
- Lightweight
- Multiple speed operation
- Chain mount standard, wall bracket optional
- One-piece foam cabinet



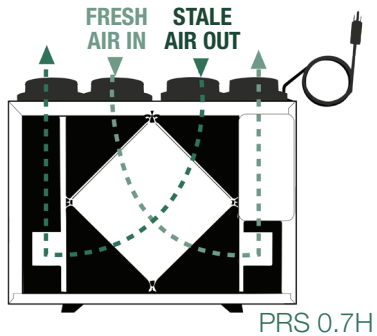
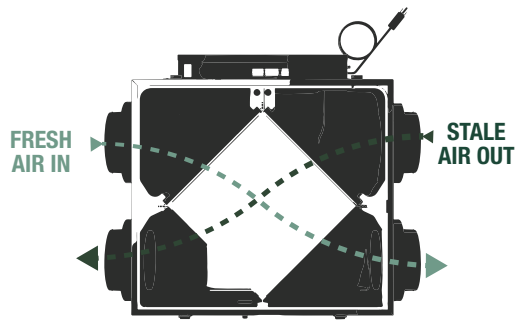
 BIM Objects available
(.RFA and .DXF files)

 Single Family
Home

Note: PREMIER 0.7H is part of the PREMIER Series, but is a top-ported appliance unlike the other side-ported appliances in the series.

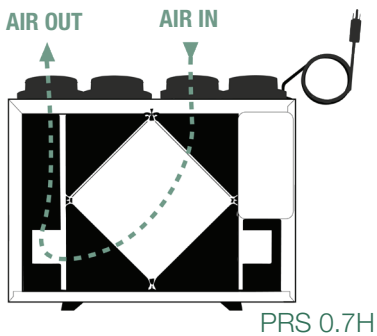
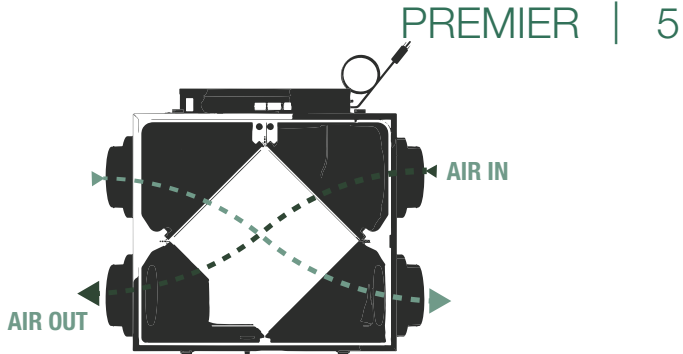


PREMIER 0.7H



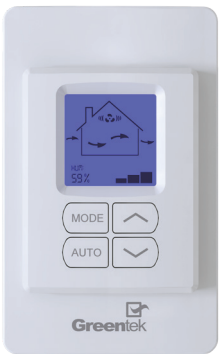
Cross-flow Core

- Up to 75% energy transfer
- Transfer heat and moisture from incoming air to outgoing air



Supply Fan Shutdown Defrost

- Simple and robust frost prevention system



Recommended Control*

EHC 2.5, Multi-Function

This control activates the system on 3 possible modes of operation:

- Ventilation Mode - Removes stale air from inside your home and replaces it with fresh outdoor air
- Recirculation Mode - Takes air from areas of your home and redistributes it to other rooms. No outdoor air is introduced into the home¹
- Standby Mode - Inactive unless the indoor relative humidity is above the setpoint on the control

The fan speed can be selected.– Reduced, Medium, Normal or 20min/h

***PREMIER** is compatible with all controls

¹This option only applies to units that have recirculating features

WHAT SETS **PREMIER** APART?



Cross-flow
Core



Lightweight



Side Ported

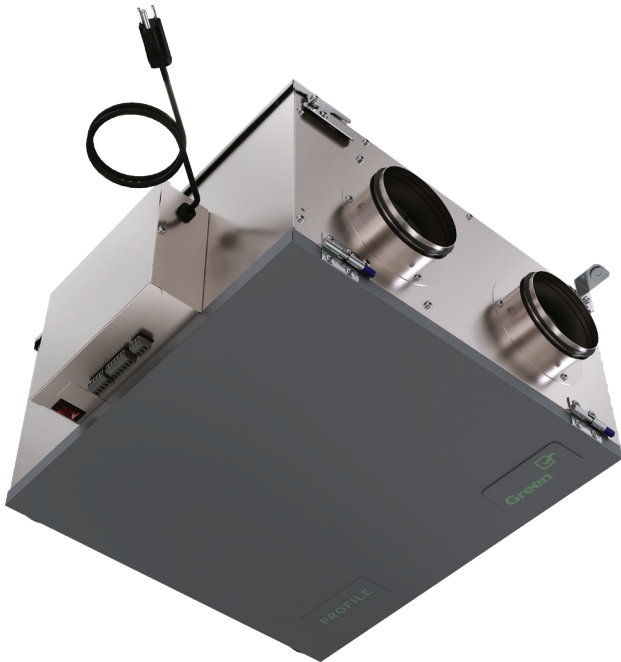
PROFILE


PROFILE features a slim housing, side port connection, energy recovery core, and supply fan modulation for frost prevention. Ideally suited for condominiums and apartments.

PROFILE brings a continuous supply of fresh air into the premises while exhausting an equal amount of contaminated air out.


The energy recovery core transfers both heat and moisture from the outgoing exhaust air to the incoming fresh air reducing the energy required to condition it. In summer time, the appliance removes humidity from the fresh air and in the winter time, it heats it while retaining humidity to keep the living area comfortable year-round.

- Energy Recovery Ventilator (ERV)
- Airflow up to 129 cfm @ 0.4 po d'eau
- Compact light-weight design with 10" installed depth
- Energy-efficient crossflow core with SRE up to 77% (0C/32F)
- MERV3 filter with MERV8 or MERV13 as optional replacement filters
- -D versions equipped with a mechanical shut-off damper
- -EC versions are ENERGY STAR Certified
- -M versions suit mirrored floor plans
- -HC versions suit direct connection to the home electrical mains
- Certifications: CSA, HVI, ENERGY STAR® (PROFILE 1.2E-D-EC only)
- Limited warranty (7 years on motors, 5 years on parts and core)
- No drain required

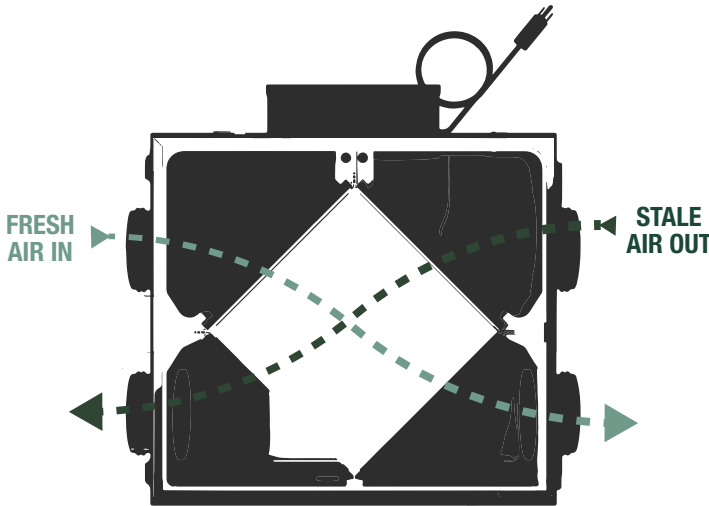




BIM Objects available
(.RFA and .DXF files)

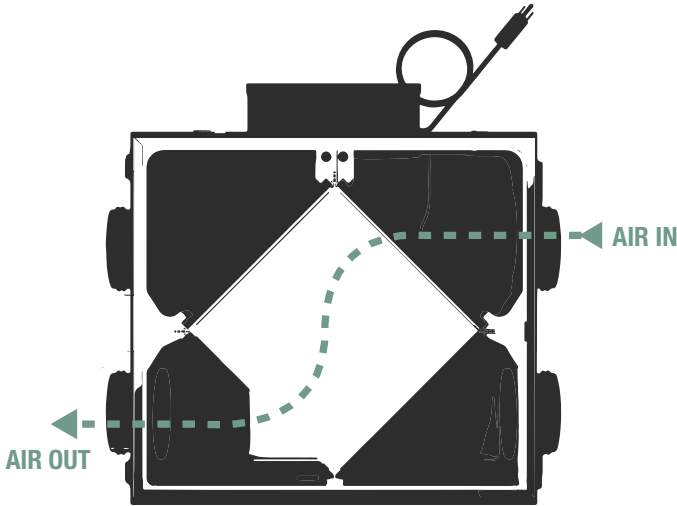


Multi-Family
Home



Cross-flow Core

- Up to 77% energy transfer
- Transfer heat and moisture from incoming air to outgoing air



Supply Fan Shutdown Defrost

- Simple and robust frost prevention system
- Integrated O/A motorized prevention damper (P1.2E-D & P1.2E-D-EC only)



Recommended Control*

T4, Timer

This control activates the system on maximum ventilation for either 20, 40 or 60 minutes depending on your selection, it then returns to the predetermined setting.

***PROFILE** is compatible with all controls

WHAT SETS **PROFILE** APART?



Cross-flow
Core



Low PROFILE



Side Ported

HS 3.0

Oftentimes, the biggest culprit behind poor indoor air quality is what we can't even see or detect. Did you know that the air you breathe in your home can be up to 70% more polluted than outdoor air? From cooking to pet dander, everyday activities and items can compromise the quality of your home's air—and, ultimately, your health.

The **HS 3.0** has a three stage filtration system: MERV8, Carbon and HEPA. This filtration system is designed to clean and filter the air in a 2000 square foot space every hour. Filter replacement is quick and simple.



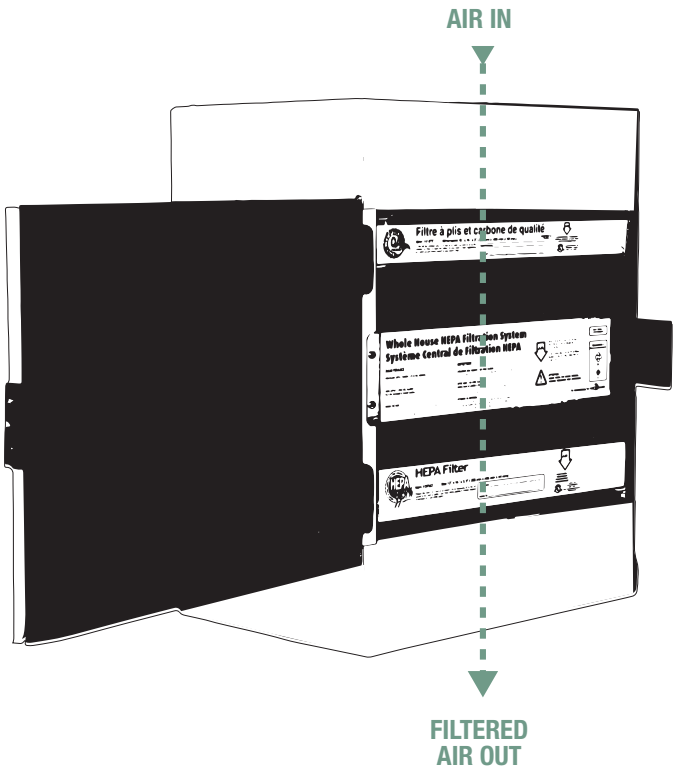
- 3-stage filtration: MERV8, pre-filter with carbon, HEPA filter
- Captures 99.97% of particles 0.3 microns and larger
- Two speed operation (208 or 282 cfm)
- No adverse effect on your forced-air system
- Fully insulated cabinet
- Recommended for spaces of up to 2000 sq.ft.



Single Family Home



Multi-Family Home



Technical Specifications

Voltage / Phase (V/~)	120 / 1
Rated power (W)	180
Max current (A)	1.23
Height (in (mm))	22 (557)
Depth (in (mm))	12 (307)
Width (in (mm))	16 (406)
Shipping weight (lbs (Kg))	33.1 (15)



Filters

Carbon Filter

- The carbon filter will capture household odors like cooking oil and smoke.

HEPA Filter

- The filter will collect up to 99.97% of particles as small as 0.3 microns in size such as carbon dust, bacteria, legionella, combustion smoke, milled flour, welding fumes, pollen, bacteria, pet dander, and mold spores.

WHAT SETS **HS 3.0** APART?



3 Filter Layers



2000 sq. ft. Coverage in 1 hour (8' ceiling)



Two Speed Operation

SOLACE®



HEAT RECOVERY MODELS






SOLACE 1.2H

SOLACE 1.5H

SOLACE 2.0H







SOLACE 1.5H-EC

SOLACE 2.5H-EC

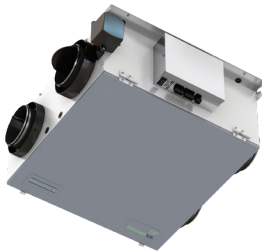
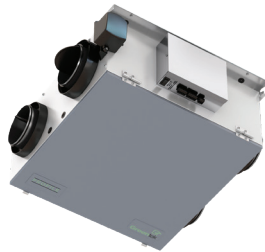
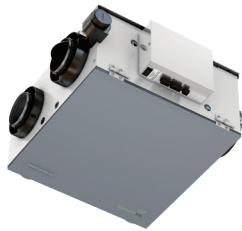
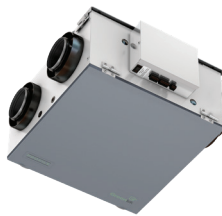
Airflow range (cfm @ 0.4 po d'eau)	53 - 112	36 - 150	76 - 203	28 - 172	31 - 252
Voltage / Phase (V/~)	120/1	120/1	120/1	120/1	120/1
Duct connection size (in (mm))	5 (127)	6 (152)	6 (152)	6 (152)	6 (152)
Consumed Power: High/Low (W)	165/69	180/59	210/98	110/23	260/34
Max sensible recovery efficiency	81	81	80	84	82
Fan Efficacy @ 0°C/32°F cfm/W	1.2	1.2	0.9	3.0	2.5
Max current (A)	1.2	1.4	2.0	3.0	6.4
Defrost cycle	Recirculation	Recirculation	Recirculation	Recirculation	Recirculation
Certification					
Height (in (mm))	24 1/4 (616)	24 7/8 (626)	24 7/8 (626)	24 7/8 (626)	24 7/8 (626)
Depth (in (mm))	11 1/2 (291)	13 3/8 (341)	15 3/8 (391)	13 3/8 (341)	15 3/8 (391)
Width (in (mm))	23 1/4 (591)	27 7/8 (707)	27 7/8 (707)	27 7/8 (707)	27 7/8 (707)
Shipping weight (lbs (Kg))	41 (19)	51 (23)	59 (26)	51 (23)	57 (26)

PREMIER



HEAT & ENERGY RECOVERY MODELS	PREMIER 0.7H	PREMIER 1.5H	PREMIER 1.5E	PREMIER 2.0H	PREMIER 2.0E	PREMIER 3.0E-EC
Airflow range (cfm @ 0.4 po d'eau)	27 - 57	60 - 150	60 - 150	60 - 200	60 - 200	130 - 300
Voltage / Phase (V/~)	120/1	120/1	120/1	120/1	120/1	120/1
Duct connection size (in (mm))	4 (100)	6 (152)	6 (152)	6 (152)	6 (152)	6 (152)
Consumed Power: High/Low (W)	48/42	168/54	168/52	168/52	168/52	200/31
Max sensible recovery efficiency	63	74	75	75	75	77
Fan Efficacy @ 0°C/32°F cfm/W	1.6	1.2	1.2	1.3	1.3	2.0
Max current (A)	0.4	1.4	1.4	1.4	1.4	6.4
Defrost cycle	Fan Shutdown	Fan Shutdown	Fan Shutdown	Fan Shutdown	Fan Shutdown	Fan Shutdown
Certification						
Height (in (mm))	17 1/8 (435)	21 7/16 (546)	21 7/16 (546)	21 7/16 (546)	21 7/16 (546)	21 7/16 (546)
Depth (in (mm))	10 1/4 (261)	11 11/16 (297)	11 11/16 (297)	11 11/16 (297)	16 5/8 (423)	16 5/8 (423)
Width (in (mm))	21 1/2 (546)	23 7/8 (606)	23 7/8 (606)	23 7/8 (606)	23 7/8 (606)	23 7/8 (606)
Shipping weight (lbs (Kg))	26 (12)	42 (19)	51 (23)	46 (21)	57 (26)	60 (27)

PROFILE



ENERGY RECOVERY VENTILATORS¹






PROFILE 0.8E

PROFILE 0.8E-D

PROFILE 1.2E

PROFILE 1.2E-D

PROFILE 1.2E-D-EC

Airflow range (cfm @ 0.4 po d'eau)	36-78	36-78	40-127	40-127	40-129
Voltage / Phase (V/~)	120/1	120/1	120/1	120/1	120/1
Duct Connection size (in (mm))	4 (102)	4 (102)	5 (127)	5 (127)	5 (127)
Consumed Power: Low/High (W)	42/52	42/52	55/104	44/104	23/74
Fan Efficacy @ 0°C/32°F cfm/W	1.5	1.5	0.9	0.9	2.2
Max sensible recovery efficiency (%)	70	70	74	74	77
Max current (A)	0.6	0.6	1.4	1.4	3
Defrost cycle	Fan Shutdown	Fan Shutdown	Fan Shutdown	Fan Shutdown ²	Fan Shutdown ²
Certification					
Height (in (mm))	20 5/8 (523)	20 5/8 (523)	23 5/32 (588)	23 5/32 (588)	23 5/32 (588)
Depth (in (mm))	21 5/8 (549)	21 7/8 (556)	24 5/8 (625)	25 1/16 (636)	25 1/16 (636)
Width (in (mm))	10 1/6 (255)	10 1/6 (255)	10 (254)	10 (254)	10 (254)
Shipping weight (lbs (Kg))	29 (13)	30 (13)	34 (15)	35 (16)	35 (16)

¹Standard has fresh air supply on the right side; Mirrored has fresh air supply on the left. Available with hard connection, optional. ² Integrated O/A motorized damper.

Controls

Optimize the experience with our exceptional controls, designed to maximize the performance of your HRV/ERV.



EHC 2.5



EHC 2.0



T4

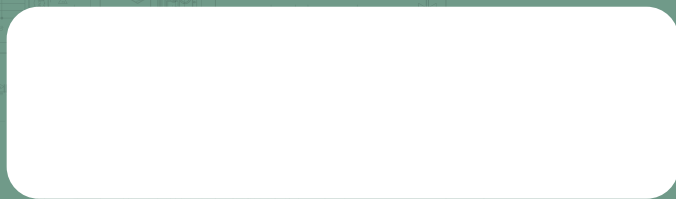


T5



Greentek
50 Kanalfakt Way, Bouctouche, NB Canada, E4S 3M5
Toll free: (888) 724-5211
Visit us at: www.greentek.ca

You can find Greentek Indoor Air Quality products at the following distributor:



Greentek reserves the right to modify a product, without prior notice, whether in design, colour or specifications, in order to offer at all times a quality product that is highly competitive. Please consult your national and local building codes to find out whether the installation of electrical products requires the services of a certified technician or electrician. Greentek® is a registered Trademark used under license by Systemair Inc. All rights reserved.