

ENGINEERING DATA

LCH-12H

Heat Recovery Ventilator
1200 CFM (566 L/s)

Item No. 463302



FEATURES

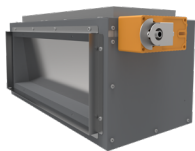
- Push-pull configuration
- 4 Operating modes* (Intermittent; Continuous; High; *Optional Recirculation)
- Dual service doors & reversible electrical box

APPLICABLE REQUIREMENTS

- Technical data was obtained from published results of test relating to AHRI 1060 Standards
- CSA Standard CSA 22.2 N^o.113-10 - Fans and ventilators
- UL Standard 1812 2nd Ed. Ducted heat/energy recovery ventilators (HRV/ERV)

OPTIONS

- 463307 GTDMK20 Recirculation damper module kit
- 463309 GTPDK20 O/A motorized prevention damper kit



GTDMK20



GTPDK20

CABINET

- 20 gauge galvanized pre-painted steel corrosion resistant

ELECTRONIC COMPONENTS

- Electrical Input Voltage: 120 VAC/60Hz / 1-Phase
- Electrical Input Current: 11.17 Amps Max
- Integrated auxiliary furnace interlock relay
- Intergrated 24V connection (18VA)
- RoHs compliant

MOTORS

- Four (4) factory balanced fans with backward curved blades.
- Motors come with permanently lubricated sealed ball bearings, maintenance free
- Thermal overload protection
- 115V, 60Hz, 2.92 Amps
- Maximum RPM 2750 / Horsepower; 0.42 HP

ALUMINUM HRV CORE

- Dimensions (3) 12" x 12" x 15" depth (305 mm x 305 mm x 380 mm)
- Corrugated cross-flow
- Transfers sensible heat
- Endure harsh temperatures; effective in cold climates
- Water washable

DEFROST

- Advanced supply fan shut down defrost sequence
- Defrost type: Evacuation
Activated automatically at -5°C (23°F)
- Optional defrost type: Recirculation (Requires GTDMK20 Damper module kit.)

DUCT CONNECTIONS

- (4) 8" x 20" (203 mm x 508 mm)

MOUNTING

- Saddle installation
- Suspended installation with threaded rod (not included)

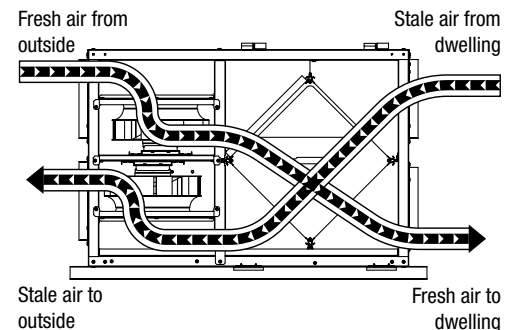
FILTERS (MERV6)

- The FRESH/EXHAUST air streams are protected by MERV6 washable filters constructed to meet UL 900.

WARRANTY

- 2 year limited warranty on motors
- 2 year limited warranty on parts
- 15 year limited warranty on Heat Recovery Core

AIRFLOW



Greentek
50 Kanalfakt Way,
Bouctouche, NB Canada E4S 3M5

Toll free: 1 888 724-5211
Fax: 1 (866) 426-7430

Visit us at: www.greentek.ca

444890 / April 2019



Greentek reserves the right to modify a product, without prior notice, whether in design, colour or specifications, in order to offer at all times a quality product that is highly competitive. Please consult your national and local building codes to find out whether the installation of electrical products requires the services of a certified technician or electrician. Greentek™ is a registered Trademark used under license by Systemair Inc. All rights reserved.

ENGINEERING DATA LCH-12H

SPECIFICATIONS LCH-12H

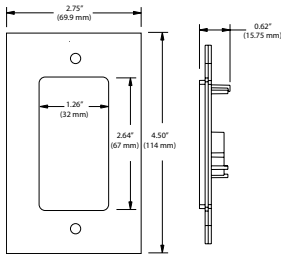
Dimensions	51.6" x 36.2" x 22" (1310mm x 920mm x 559 mm)
Duct Connections	Four (4) 8" x 20" (203mm x 508mm)
Airflow Rates	1200 CFM (566 L/s)
Motor	Four (4) factory balanced fans with backward curved blades
Voltage	120 VAC @ 60 Hz / 1 Phase
Amperage	11.17A / 1340 Watts
Type of Heat Exchanger	(3) Aluminum Cross-flow
Exchange Surface	>513 in ² (0.33m ²)
Standard Defrost Type	Evacuation
Optional Defrost Type	Recirculation (with 463307 GTDMK20 Damper)
Filters	Six (6) MERV 6 washable filters
Drain Connection	Two (2) ½" (12.7 mm)
Actual Weight	252 lbs (114.5 Kg)
Shipping Weight	319 lbs (144.5 Kg)
Shipping Dimensions	38" x 53" x 27" (965mm x 1346mm x 686mm)
Certification	cCSAUS, CSA 22.2 N ^o .113 Complies with UL 1812

OPTIONAL WALL CONTROLS

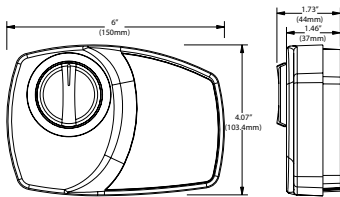
Vectra Series	EHC 1.5 and EHC 1.0
RD Series	RD-1, RD-2, RD-3P, RD-4P, RD-3D*, RD-4D* * Recirculation
Timers	T3 (20, 40, 60 minutes)

WALL CONTROL DIMENSIONS

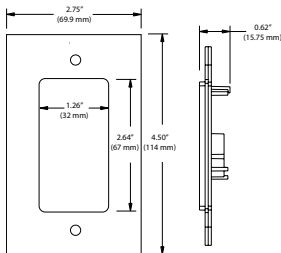
Vectra Series



RD Series

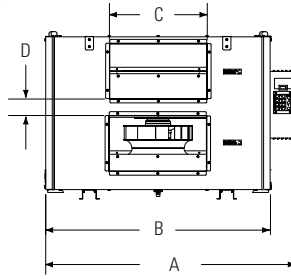


T3 Timer

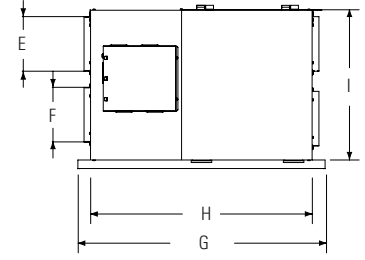


DIMENSIONS DATA

Side View



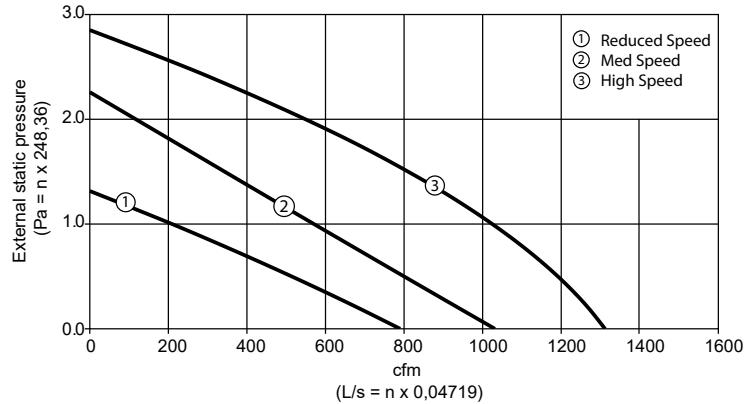
Front View



A	B	C	D	E	F	G	H	I
in (mm)	in (mm)	in (mm)	in (mm)	in (mm)	in (mm)	in (mm)	in (mm)	in (mm)
51.6 (1310)	47.3 (1202)	20 (508)	2.5 (63)	8 (203)	8 (203)	36.2 (920)	32.5 (826)	22 (559)

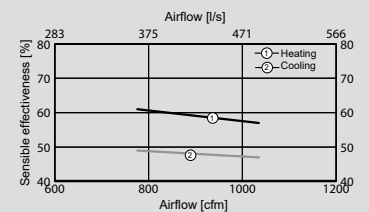
VENTILATION PERFORMANCE

in. wg. (Pa)	0.2 (50)	0.4 (100)	0.6 (150)	0.8 (200)	1.0 (250)	1.4 (350)	1.8 (450)	2.0 (500)
	cfm (L/s)	cfm (L/s)	cfm (L/s)	cfm (L/s)	cfm (L/s)	cfm (L/s)	cfm (L/s)	cfm (L/s)
Supply high	1269 (599)	1219 (575)	1161 (548)	1096 (528)	1023 (483)	855 (404)	656 (310)	545 (257)
Supply med	938 (443)	845 (399)	753 (355)	661 (312)	569 (269)	386 (182)	204 (96)	114 (54)
Supply low	683 (322)	570 (269)	454 (214)	333 (157)	209 (99)	-	-	-



ENERGY PERFORMANCE CORE*

	Net Air Flow		Net Effectiveness	
	L/s	CFM	Sensible	Total
HEATING	488	1035	57	37
	366	776	61	40
COOLING	488	1035	47	18
	366	776	49	19



*Actual performance may vary pending conditions

Quoted by:	Date:
Project:	Remarks:
Quantity:	
Model:	
Site:	
Architect:	
Engineer:	
Contractor:	